

# LAOIS HIRE

PUMPS DIVISION

*Hire or Buy Selwood pumps from Laois Hire*



**SELWOOD**  
[www.selwoodpumps.com](http://www.selwoodpumps.com)

*Laois Hire is the official agent for Selwood pumps in Ireland*

# Selwood Pumps



## **Laois Hire Background:**

Laois Hire, headed up by Michael Killeen, is one of Ireland's largest and most well-known hire companies. Now employing 250 people on the island of Ireland, the company has a remarkable back-story and an even brighter future. Laois Hire joined the international HSS Hire group in 2005 experiencing vast expansion under the leadership of Killeen.

The combined HSS/Laois Hire Group provides a complete equipment management and hire service, operating since 1957. As the only nationwide hire company, HSS/Laois Hire Group has an established network of 24 hire branches and supercentres across Ireland.

## **Selwood Background:**

Founded in 1946, Selwood is now a £50m turnover company employing 420 staff throughout its nationwide network of branches and is one of the largest privately owned companies serving the water, environmental and construction industries. Selwood has designed and manufactured mobile site pumps since 1953 and is now acknowledged as one of the UK leaders in this field with 75% of units being exported through a worldwide distributor network.

## **Selwood Agency Win:**

In 2013 Laois Hire won the agency for Selwood pumps in Ireland. Since then Laois Hire customers have benefited greatly from the hire and purchase of Selwood Pumps.

## **Selwood Projects:**

Laois Hire has already grown Selwood's Irish business base and this is set to continue with high-profile contract wins most notably large-scale road building projects such as the M17/M18 Tuam to Gort motorway in Galway, the M11 Gorey to Enniscorthy motorway as well cleaning rivers and canals with Waterways Ireland.

More recently, Laois Hire assisted Enva Ireland Ltd in pumping crude oil from a million-litre holding tank on a project along a 3km pipeline out to an awaiting ship, using a Selwood high head pump which has the capacity to pump 200 tons of crude oil per hour.

## **Mission Statement**

*"Selwood Pumps is proud to deliver to you the highest quality contractors pumps, supported worldwide by local partners committed to outstanding levels of service"*

## **Core Values**

1. To provide and promote an environmentally safe and accident free work place.
2. To build, maintain and develop profitable business relations with our customers and stakeholders through honesty and integrity.
3. To excel in the delivery and innovation of high quality products, services and technical expertise.
4. To work as a team, demanding the best of ourselves and to understand the impact of our words and actions on each other.
5. To value and promote learning and personal development, committing to recognise the efforts of everyone.

## **Quality, Health, Safety & Environment**

With a commitment to quality, safety and the environment, Selwood is proud to be one of the few companies within the UK that holds all three recognised standards:-

BS OHSAS 18001	- Health & Safety
ISO 9001	- Quality
ISO 14001	- Environmental

## **CE**

Our products conform to the E.E.C. Machinery Safety Directive and carry the C.E. mark.

## **BSI**

BSI provides best practice solutions and standards and represents interests across all of the European and international standards.

## **Environmental Features**

### **Selprime**



- Unique original design.
- Water tolerant diaphragm air pump.
- None of the problems of oil vapour emissions and oil emulsification associated with other priming systems.

### **Super Silent**

- Noise levels from as low as 58 db(A) at 7m.

### **Fully Bunded**

- Super Silent units are fully bunded.
- Fuel or oil leakage is retained within the bund and does not contaminate the surroundings.

### **Auto Stop/Start**

- Float control for automatic stopping and starting of the pump.
- Simple, outstanding performance for the cost conscious.

### **Telemetry**

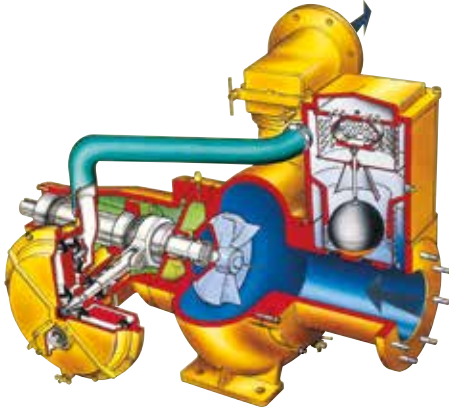
- Remote measurement and reporting of the pumps operation.
- Contact to pre-selected mobiles or land lines, providing real time alarm messages.

### **HS Pump Hydraulics**

- Hydraulic system can run on synthetic biodegradable or vegetable oil.

See our Corporate Video  
[www.selwood.co.uk/pumps-sales-video/](http://www.selwood.co.uk/pumps-sales-video/)

# Selwood Solids Handling 'S' Range



## Features

- Solids handling to 120mm
- Vortex style pump
- Environmentally friendly Selprime automatic self priming
- Emission compliant engines
- Ease of operation & maintenance
- Proven design

## Options

- Super Silent canopy - lockable and fully bunded
- Road tow
- Skid, site & static chassis
- Auto stop-start controls
- Telemetry systems
- Oil drain kit
- Auxiliary fuel connection
- Chalwyn valve spark arrester

## Applications

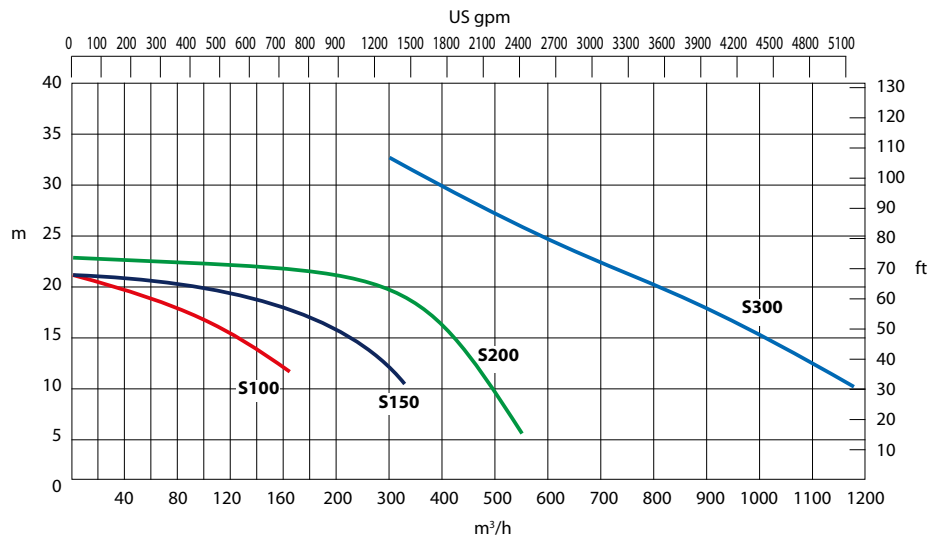
- Raw & screened sewage
- Sludge / Slurry
- Water with fine & large solids
- Water with rags & fibres

## Industries

- Water & waste water
- Construction & civil engineering
- Oil & gas
- Quarry & mining
- Rental
- Oil spill recovery
- Pollution control
- Marine
- Municipal
- Industrial

Specification		S100	S150	S200	S300
Capacity	m <sup>3</sup> /h	165	320	560	1100
Total Head	m	21.3	21.3	23	32
Solids Size	mm	75	100	100	120
Self Priming Lift	m	8.8	8.8	8.8	8.8
Air Handling	l/s	24	24	24	24
Power Required	kW	16	32	42	80
Pump Speed	rpm	1600	1600	1600	1600
Inlet / Outlet	mm	100	150	200	300

Data Sheets are available at [www.selwoodpumps.com](http://www.selwoodpumps.com)



S100



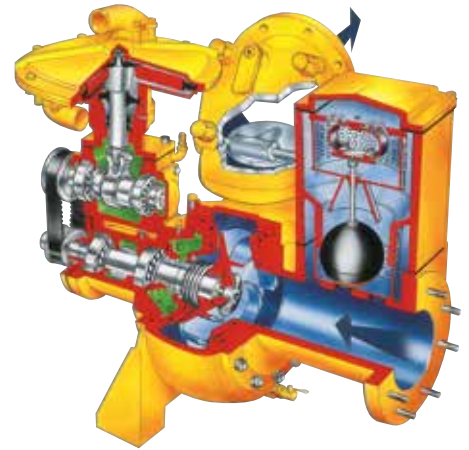
S150



S200

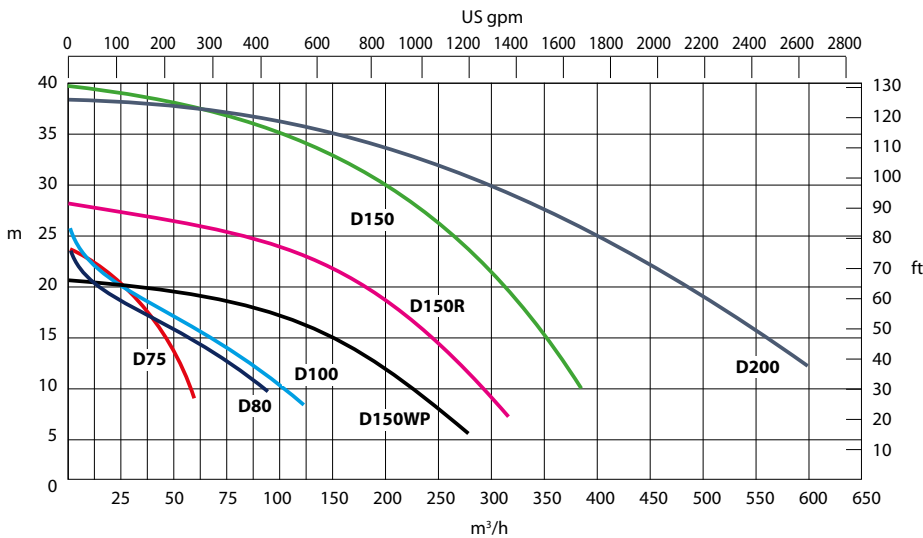


# Selwood Drainer 'D' Range



Specification		D75	D80	D100	D150	D150WP	D150R	D200
Capacity	m <sup>3</sup> /h	59	90	120	380	275	315	600
Total Head	m	23.5	23	26	40.5	21	27	37.5
Solids Size	mm	29	29	29	45	45	45	55
Self Priming Lift	m	8.8	8.8	8.8	8.8	8.8	8.8	8.8
Air Handling	l/s	4.25	4.25	4.25	24	48	24	24
Power Required	kW	3.8	6.5	6.5	28	12	17	42
Pump Speed	rpm	2000	2000	2000	2000	1500	1750	1500
Inlet / Outlet	mm	75	80	100	150	150	150	200

Data Sheets are available at [www.selwoodpumps.com](http://www.selwoodpumps.com)



## Features

- Flows up to 600 m<sup>3</sup>/h
- Environmentally friendly Selprime automatic self priming
- Emission compliant engines
- Ease of operation & maintenance
- Robust construction

## Options

- Super Silent canopy - lockable and fully bunded
- Road tow
- Skid, site & static chassis
- Auto stop-start controls
- Telemetry systems
- Oil drain kit
- Auxiliary fuel connection
- Chalwyn valve spark arrester

## Applications

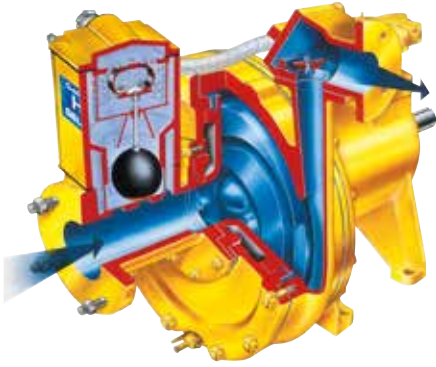
- Clean water
- Water with fine solids
- Water with larger solids
- Screened sewage

## Industries

- Construction & civil engineering
- Water & waste water
- Quarry & mining
- Municipal
- Rental
- Ground stabilisation and piling
- Marine
- Industrial
- Pollution control



# Selwood High Head 'H' Range



## Features

- Total heads up to 158m
- Mechanical shaft sealing
- Environmentally friendly Selprime automatic self priming
- HM - hard metal pumps for abrasive applications
- Emission compliant engines
- Ease of operation & maintenance
- Robust construction

## Options

- Super Silent canopy - lockable and fully banded
- Skid or static chassis
- Oil drain kit
- Auxiliary fuel connection

## Applications

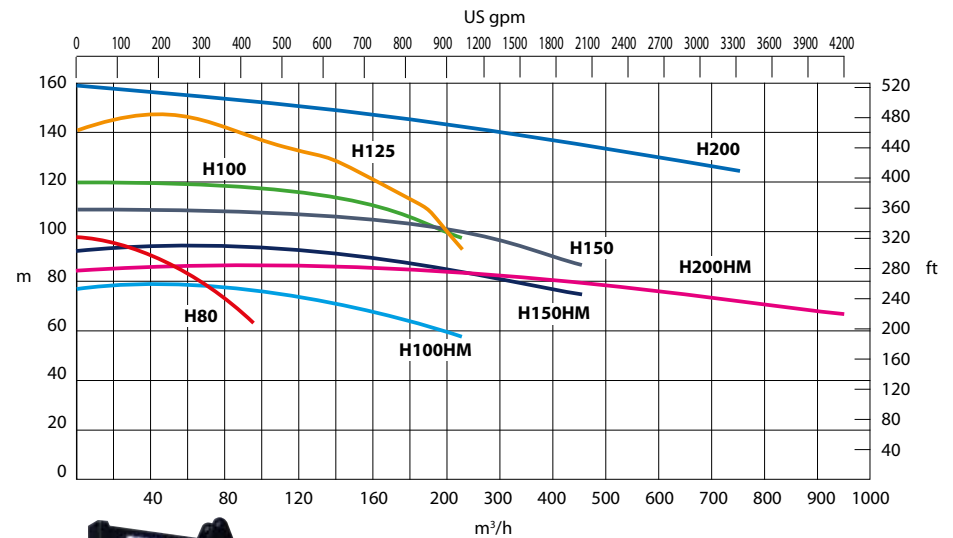
- High head dewatering
- Pipeline testing & cleaning
- Water boosting
- High volume jetting
- Temporary fire pump

## Industries

- Quarry & mining
- Construction & civil engineering
- Ground stabilisation and piling
- Oil & gas
- Marine
- Water & waste water
- Rental
- Industrial

Specification		H80	H100	H125	H150	H200	H100 HM	H150 HM	H200 HM
Capacity	m <sup>3</sup> /h	95	225	TBA	450	750	225	450	950
Total Head	m	95	120	TBA	106	158	79	95	85
Solids Size	mm	19	30	TBA	30	45	30	38	60
Self Priming Lift	m	8.8	8.8	TBA	8.8	8.8	8.8	8.8	8.8
Air Handling	l/s	4.25	24	TBA	24	24	24	24	24
Power Required	kW	30	82	TBA	138	330	87	130	250
Pump Speed	rpm	2000	2200	TBA	1800	1800	2200	1800	1600
Inlet / Outlet	mm	80	100	TBA	150	200	100	150	200

Data Sheets are available at [www.selwoodpumps.com](http://www.selwoodpumps.com)



H150



H200



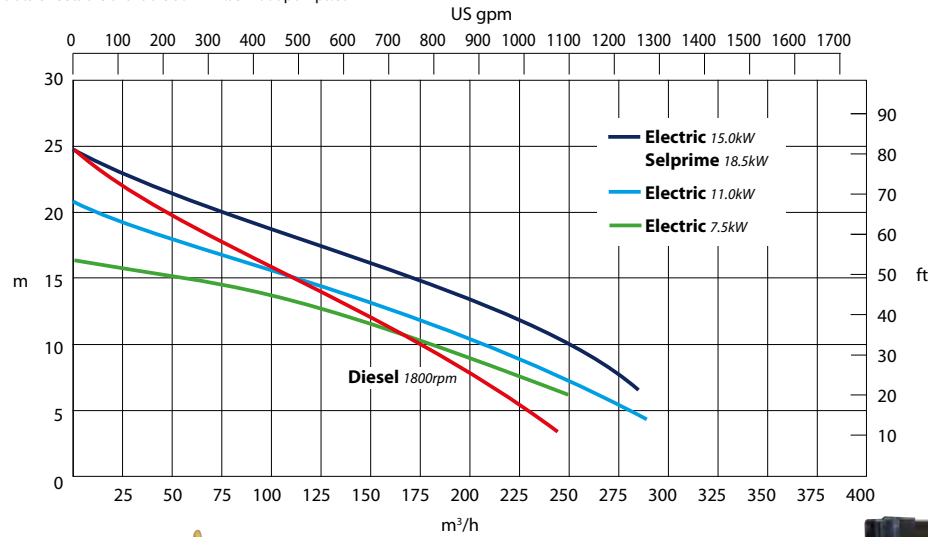
H100

# Selwood Chopper 'C' Range



Specification		C150 Diesel	C150 Electric	C150 Electric / Selprime
Capacity	m <sup>3</sup> /h	240	285	285
Total Head	m	24.5	24	24
Solids Size	mm	38	38	38
Self Priming Lift	m	8.8	-	8.8
Air Handling	l/s	24	-	24
Power Required	kW	20	7.5 / 11 / 15	18
Pump Speed	rpm	1800	1440	1440
Inlet / Outlet	mm	150	150	150

Data Sheets are available at [www.selwoodpumps.com](http://www.selwoodpumps.com)



## Features

- Non-blocking
- Hardened chopping impeller
- 3000 cuts per minute
- Environmentally friendly Selprime automatic self priming
- Efficient electric motors
- Ease of operation & maintenance

## Options

- Super Silent canopy - lockable and fully bunded
- Road tow
- Skid, site & static chassis
- Selprime or non prime
- Motor sizes to suit application

## Applications

- Raw & screened sewage
- Liquid conditioning
- Sludge
- Organic material
- Rags & fibres

## Industries

- Water & waste water
- Industrial
- Food process
- Municipal
- Marine
- Rental



# Selwood Hydraulic Submersible 'HS' Range



<b>HSP10</b>	HS50 - D - H
<b>HSP20</b>	HS100 - C - D
<b>HSP35</b>	HS100 - H - SC HS150 - C - D - SC
<b>HSP110</b>	HS200 - D Seldredge (C - SC)

Specification		HSP10	HSP20	HSP35	HSP110
Engine Speed	rpm	1793	1835	1586-1874	1586
Hydraulic Flow	l/min	20	30	60	20 / 60 / 120
Hydraulic Pressure	bar	118 - 165	190 - 244	155 - 240	118 - 210

Data Sheets are available at [www.selwoodpumps.com](http://www.selwoodpumps.com)

One power source with a range of different pumps.

**C - Chopper D - Drainer H - High Head SC - Screw**

## Features

- Multiple hydraulic circuits
- Environmentally friendly
- Up to 100m hose
- 24hr running
- Emission compliant engines
- Ease of operation & maintenance
- Robust construction

## Options

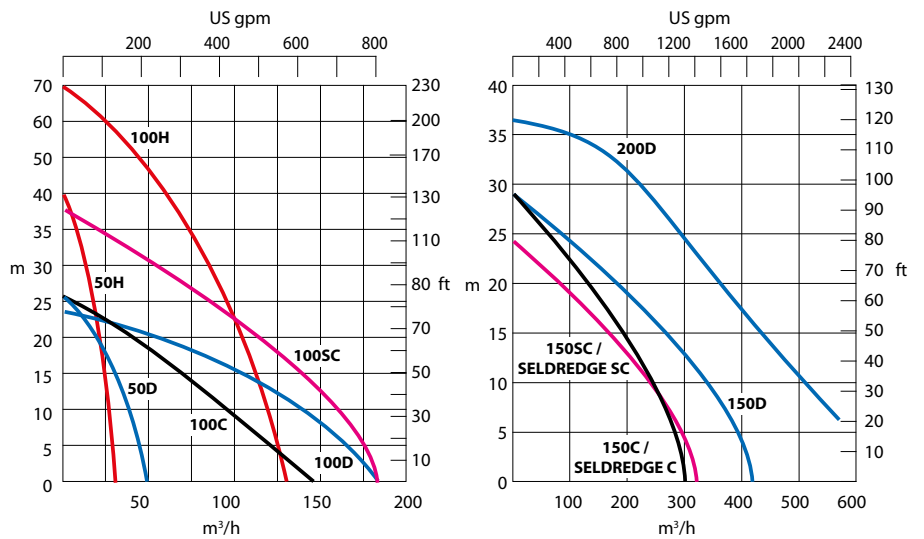
- Super Silent canopy - lockable and fully bunded
- Road tow
- Skid, site & static chassis
- Auto stop-start controls
- Telemetry systems
- Oil drain kit
- Auxiliary fuel connection

## Applications

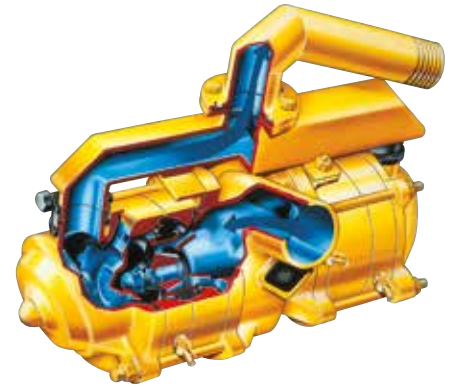
- Clean water
- Water with fine & large solids
- Raw & screened sewage
- Sludge / Slurry
- Water with rags & fibres

## Industries

- Construction & civil engineering
- Water & waste water
- Quarry & mining
- Ground stabilisation and piling
- Rental
- Municipal
- Marine
- Industrial
- Oil & gas
- Oil spill recovery
- Pollution control

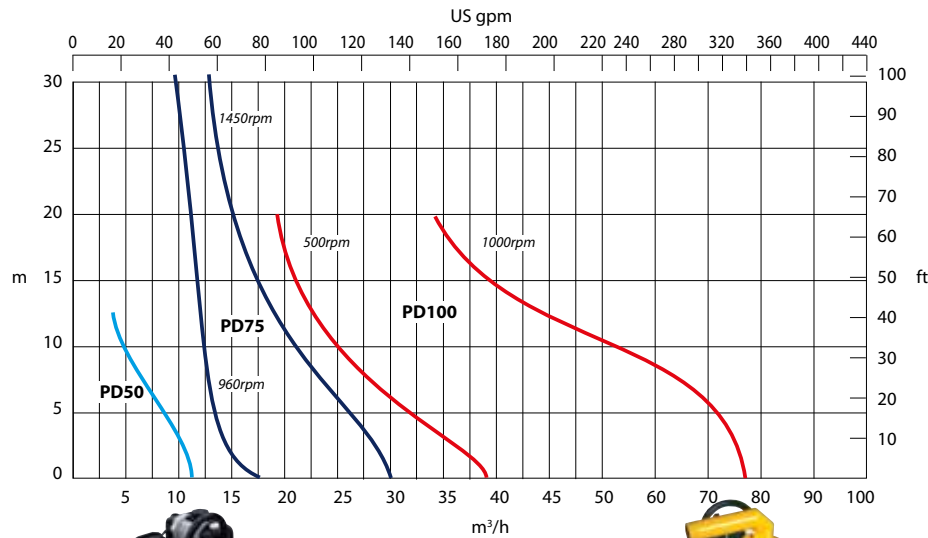


# Selwood Positive Displacement 'PD' Range



Specification		PD50	PD75	PD100
Capacity	m <sup>3</sup> /h	11	30	77
Total Head	m	12	30.5	20
Solids Size	mm	13	6	16
Self Priming Lift	m	6.7	8.8	8.8
Air Handling	l/s	-	3.77	11.8
Power Required	kW	0.75	2.5	6
Pump Speed	rpm	90	1450	1000
Inlet / Outlet	mm	50 / 75	75	100

Data Sheets are available at [www.selwoodpumps.com](http://www.selwoodpumps.com)



## Features

- Non turbulent flow
- Indefinite dry running
- Environmentally friendly automatic self-priming
- Emission compliant engines
- Ease of operation & maintenance
- Proven design

## Options

- Skid, site & static chassis
- Oil tolerant seals
- Threaded connections
- Chalwyn valve
- Spark arrestor

## Applications

- Oil recovery & skimming
- Light & heavy oils
- Petroleum industry products
- Viscous liquids
- Polymers
- Clean water
- Dirty water
- Water with fine solids
- Sludge / Slurry
- Wellpoint systems
- High volume jetting

## Industries

- Oil spill recovery and pollution control
- Fire & rescue
- Oil & gas
- Marine
- Ground stabilisation and piling
- Construction and civil engineering
- Rental

PD75



PD100



**laoishire.com**  
**LoCall 1850 20 40 40**  
**INFO@LAOISHIRE.COM**

**LAOIS HIRE**  
**PUMPS DIVISION**

Clonminam Industrial Estate,  
 Portlaoise, Co. Laois, Ireland